

SEND Improvement Plan Webinar

SNJ Round Table WEBINAR

SPECIAL
NEEDS
JUNGLE

Will the Government's "Improvement Plan fix SEND?



*Hayley
Mason*



*Steve
Broach*



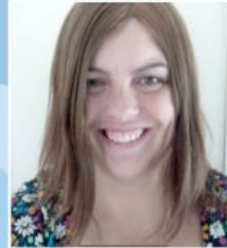
*Renata
Blower*



*Tania
Tirraoro*



*Matt
Keer*



*Sharon
Smith*

FREE
(optional
donation)

Wed March 15th
7:30-9pm

REGISTER:
<https://bit.ly/SNJplanRT>

Donate: bit.ly/SNJRTdonate

SEND “Change Programme” Snapshot

NO CHANGE TO SEND LEGAL ENTITLEMENTS. THIS MEANS:

- **NO CHANGE to EHCP Assessment Criteria**
- **NO CHANGE to rights of appeal.**
- **NO CHANGE to mediation (even if you’re involved in a “Change Programme” pilot)**

- **If you are told otherwise: CHALLENGE THEM!**



2023 SEND “Change Programme” Snapshot

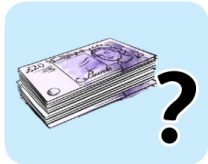
The **standards** will explain:



- what support should be available



- who should provide it



- who should pay for it.



We will work together with children, young people, families and other people to write these standards and make sure they are fair.

- Create a new **National SEND and Alternative Provision Implementation Board** co-chaired by the SEND and Health Ministers – will include parental stakeholders
- **National Standards:** Engagement across education, health and care (Spring)
- Create **Regional Expert Partnerships** led by LAs to start testing out NS proposals.
- Publish local and national “inclusion dashboards”.
- Create local “**SEND and alternative provision partnerships**” to boost support for CYP with SEND and in alternative provision.
- Work with local areas to create “**evidence-based local inclusion plans.**”
- **Tailored Lists:** Test co-produced “**tailored lists**” of suitable settings for EHCP placements in some areas.
- **EHCPs:** Develop “digital requirements” for EHCPs
- AP: Set up an **expert group** to support the development of a “national alternative provision performance framework”.

2023 “Change Programme” Snapshot

- **SEND CoP:** To be amended after **consultation** to support NS alongside newly-created practitioner guides.
- **Post-16:** Support the DWP Adjustment Passport pilot and improve Disabled Students’ Allowance.
- **Post-16:** Look at ways to improve access to apprenticeships and boost Supported Internships
- **Already underway:** New Phase Ofsted and Care Quality Commission area SEND inspections.
- **Already underway:** Support local authorities through the delivering better value and safety valve programmes.
- **Health:** Require every health Integrated Care Board (replacement for CCGs) to have a board member for SEND.
- **Mediation:** “Improve advice and guidance for families” on mediation and update the professional standards for SEND mediators.
- Create a three-tier AP system 1: targeted early support in mainstream, 2. “time-limited intensive placements” in AP 3. longer-term placements to “support return to mainstream or a “sustainable post-16 destination”.
- **Training:** Review initial teacher training and early career frameworks.
- **Training:** Fund up to 5,000 level 3 early years SENCOs (some areas only)
- **Training:** Dump the NASENCO and replace with NPQ
- **Training:** Research current school approaches for teaching assistants
- 2025: deliver a standard EHCP template, with supporting processes and guidance from 2025.
- (Not an exhaustive list)



Thank you for joining us!

Donate:

bit.ly/SNJRTdonate

